



■ Ultra 700 sliding door

It acts as a throughway for large industrial trucks and/or in spaces where traffic is dense, e.g. : warehouses, processing shops ... Its high insulation properties enable it to be used inside and outside alike. Injected polyurethane foam insulation Sheet steel monobloc doorframe Thickness 100 mm for positive temp. Thickness 150 mm for negative temp. Dim. 2500x1600mm to 3200x3200mm in positive, to 3200x2400mm in negative

► Options

- kick plate at base of door
- Surface-mounted key lock with unlocking from inside
- stainless steel track opening and seating
- stainless steel track
- protective tube at base
- electric automatism
- 24V heater strip
- organization chart
- stainless steel frame
- grey PVC track cover



■ Flush service door

A service door for offices, special purpose areas and work spaces, it is designed as a throughway for personnel and can be installed in spaces where temperatures are similar. One or two leaves. PVC or lacquered aluminium monobloc doorframe Thickness 40 mm Dimensions : from 2040x610 mm to 2440x2040 mm

► Options

- kick plate at base of door
- panic bar kit
- door closer
- foot stop
- stainless steel sill for outside door
- oculus 600 x 300 mm
- organization chart
- stainless steel frame



■ Swinging door

Used to separate premises with similar temperatures it can be installed in spaces where traffic is dense as a throughway for personnel and small trucks One or two leaves. Lacquered aluminium monobloc doorframe. Thickness 40 mm Dimensions: from 2250x810 mm to 2250x2010 mm

► Options

- kick plate at base of door
- bumper bar in stainless steel
- protective tube at base
- stainless steel frame



■ Strip curtain - Flexible door

The strip curtain is used to separate premises with similar temperatures. and where traffic is dense or where visibility is required.

The flexible door is used to separate premises with similar temperatures and where traffic is dense or where visibility is required.



Dagard can supply non-standard dimensions along with other types of doors: lifting grates, folding or sectional doors, quick roll-up curtains.

This very comprehensive range meets all opening criteria.



Route du stade - 23600 Boussac - France
tél. +33(0)555.82.40.00-fax. +33(0)555.65.18.54
www.dagard.com - info@dagard.com

Door Line

DGP-0001-E/A Non-contractual document Dagard reserves the right to modify its products without prior notice.

Doors to meet your
opening requirements



A comprehensive range

Doors play a very important part in any installation. They are resistant to constant opening and closing, to aggressive surrounding environments, to often hard cleaning conditions and to blows caused by passing trolleys and trucks. They meet the stringent resistance and insulation criteria required by industrial cold storage or retail trade areas of activity.

Dagard has available doors with standard facings in powder-coated sheet metal, iceberg white (near RAL 9010).

Claddings, on request, can be of stainless steel plate or sheet metal powder-coated with PVDF, coated with PVC film, or with a PET complex, or of polyester.

Panel faces have received approval for contact with food to comply with European directives 89/109 and 93/43.

Several criteria must be weighed up when selecting a type of door :

Type of door and passageways

The type of door and its mode of opening must be appropriate to the layout of premises and the use.

Thermal insulation

The doors possess different insulation characteristics. The appropriateness of the type of door must be checked against the constraints of the planned utilization.

Behaviour in fire

In cases where the enclosure has to meet specific fire regulations, the door must be selected according to criteria of fire reaction or fire resistance.

Clear opening

In order to determine the required dimensions of doors, it is important to check on the use planned for the clear opening (throughway for people, goods and equipment).

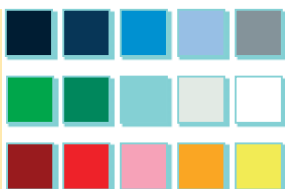
Panel face / environment

The type of panel face will be selected depending on the surrounding environment and on whether the door will be used intensively or not.

Specific utilizations

In cases of intensive or specific utilizations, the doors can be fitted with options to enhance their performance or resistance: door kick plates, tubular guards, automatic operations, track openings ...

Colour chart



Advantages

Tough
Functional
Efficient
Attractive



Hinged door

Designed for warehouses, processing shops and providing a through way for personnel, it is used both inside and outside in positive and negative temperature environments.

Injected polyurethane foam insulation
Lacquered aluminum monobloc doorframe

Thickness 60 mm for positive temp.

Thickness 120 mm for negative temp.

Dimensions:

from 850 x 620mm to 2200 x 1500mm

Options

- guard at base of door
- panic bar kit
- rack opening
- handrail
- 24V heater strip
- oculus for positive temperature
- canopy
- organization chart
- stainless steel frame



Alpha 200 sliding door CE

Used inside, designed for positive temperature, it is economic, simple, convenient and effective. It is provide of PVC inside cleanliness plate.

Injected polyurethane foam insulation
Sheet steel monobloc doorframe

Thickness 60 mm for positive temp.

Dim. from 1850 x 800 mm to 2200 x 1600 mm

Options

- key lock in wall lamp with inside unlocking of the lock
- opening from outside and/or inside with lever handle
- protective tube at base
- organization chart



Alpha 500 sliding door CE

Used inside or outside, it provides a through way for personnel and smaller types of trucks. It resists to shocks and stains thanks to its stainless steel outside protection and its PVC inside cleanliness plate.

Injected polyurethane foam insulation.
Lacquered aluminum monobloc doorframe

Thickness 60 mm for positive temp.

Thickness 120 mm for negative temp.

Dimensions:

from 1850x950 mm to 2500x2400 mm

Options

- kick plate at base of door
- Surface-mounted key lock with unlocking from inside
- rack opening
- protective tube at base
- electric automatism
- organization chart
- version 520 all stainless steel or with sheet steel leaf, non-automatable



Ultra 600 sliding door CE

It acts as a throughway for large industrial trucks in spaces where traffic is dense. It uses inside or outside for negative or positive temperatures. Injected polyurethane foam insulation. Lacquered aluminum monobloc doorframe.

Thickness 85 mm for positive temp.

Thickness 150 mm for negative temp.

Dim. 2500 x 1600 mm to 3200 x 3200 mm

Options

- kick plate at base of door
- key lock in wall lamp with inside unlocking of the lock
- stainless steel track opening and seating
- protective tube at base
- electric automatism
- organization chart
- stainless steel frame
- grey PVC track cover